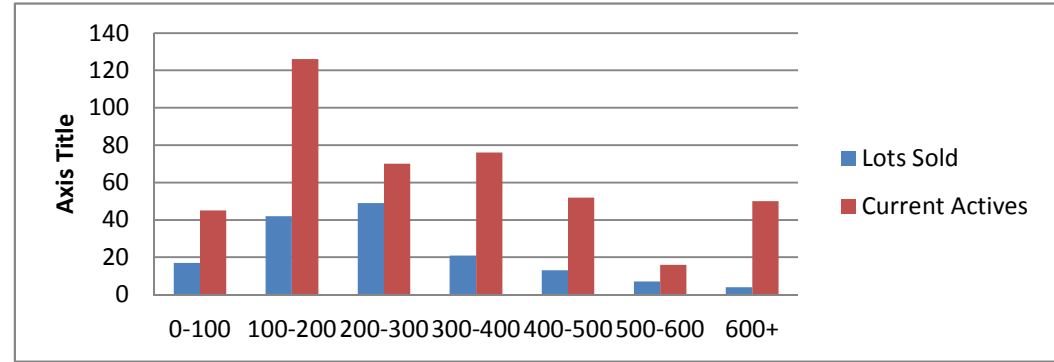


9-2-13--9-2-14 Waterfront Lots on Lake Keowee

	Units Sold	DOM Avg.	Total List Avg	Total Sold Avg	% List/Sale	Current Active	Supply/Yrs
0-100	17	183	\$86,388.00	\$66,758.00	77%	45	2.65
100-200	42	200	\$176,159.00	\$153,864.00	87%	126	3.00
200-300	49	219	\$280,095.00	\$248,612.00	89%	70	1.43
300-400	21	116	\$373,152.00	\$330,833.00	89%	76	3.62
400-500	13	330	\$505,968.00	\$441,915.00	87%	52	4.00
500-600	7	227	\$662,685.00	\$545,714.00	82%	16	2.29
600+	4	18	\$1,136,250.00	\$1,043,750.00	92%	50	12.50
Totals	153				84.42%	435	2.84



9-2-13--9-2-14 Waterfront Homes on Lake Keowee

In 1000's	Units Sold	DOM Avg.	List Avg	Sold Avg	List/Sale	Active	Supply/Yrs
250-400	16	137	\$380,175.00	\$361,900.00	95%	21	1.31
400-500	26	189	\$495,884.00	\$456,571.00	92%	25	0.96
500-600	14	98	\$585,128.00	\$555,700.00	95%	33	2.36
600-700	27	187	\$700,803.00	\$648,203.00	92%	28	1.04
700-800	21	179	\$814,128.00	\$744,026.00	91%	14	0.67
800-1000	16	217	\$938,050.00	\$866,437.00	92%	39	2.44
1000-1500	8	246	\$1,424,500.00	\$1,298,625.00	91%	29	3.63
1500-2000	8	291	\$1,833,187.00	\$1,656,500.00	90%	30	3.75
2000-up	3	216	\$2,596,666.00	\$2,133,333.00	82%	9	3.00
Totals	139				90.50%	228	1.64

