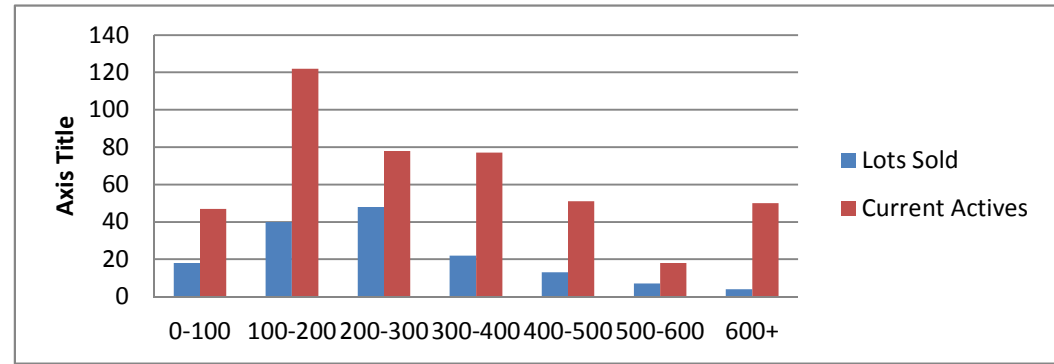


8-5-13--8-5-14 Waterfront Lots on Lake Keowee

	Units Sold	DOM Avg.	Total List Avg	Total Sold Avg	% List/Sale	Current Active	Supply/Yrs
0-100	18	191	\$83,811.00	\$65,355.00	78%	47	2.61
100-200	40	213	\$176,770.00	\$153,887.00	87%	122	3.05
200-300	48	221	\$283,291.00	\$248,677.00	88%	78	1.63
300-400	22	123	\$374,577.00	\$329,659.00	88%	77	3.50
400-500	13	330	\$505,968.00	\$441,915.00	87%	51	3.92
500-600	7	247	\$654,685.00	\$542,000.00	83%	18	2.57
600+	4	18	\$1,136,250.00	\$1,043,750.00	92%	50	12.50
<b>Totals</b>	<b>152</b>				<b>84.42%</b>	<b>443</b>	<b>2.91</b>



8-5-13--8-5-14 Waterfront Homes on Lake Keowee

In 1000's	Units Sold	DOM Avg.	List Avg	Sold Avg	List/Sale	Active	Supply/Yrs
250-400	17	160	\$378,388.00	\$355,300.00	94%	21	1.24
400-500	25	191	\$497,884.00	\$458,314.00	92%	25	1.00
500-600	16	119	\$597,043.00	\$557,550.00	93%	33	2.06
600-700	27	182	\$699,877.00	\$648,611.00	93%	28	1.04
700-800	22	191	\$812,350.00	\$742,479.00	91%	14	0.64
800-1000	16	251	\$931,743.00	\$860,437.00	92%	39	2.44
1000-1500	8	246	\$1,424,500.00	\$1,298,625.00	91%	29	3.63
1500-2000	6	253	\$1,819,650.00	\$1,644,833.00	90%	30	5.00
2000-up	3	216	\$2,596,666.00	\$2,133,333.00	82%	9	3.00
<b>Totals</b>	<b>140</b>				<b>90.50%</b>	<b>228</b>	<b>1.63</b>

