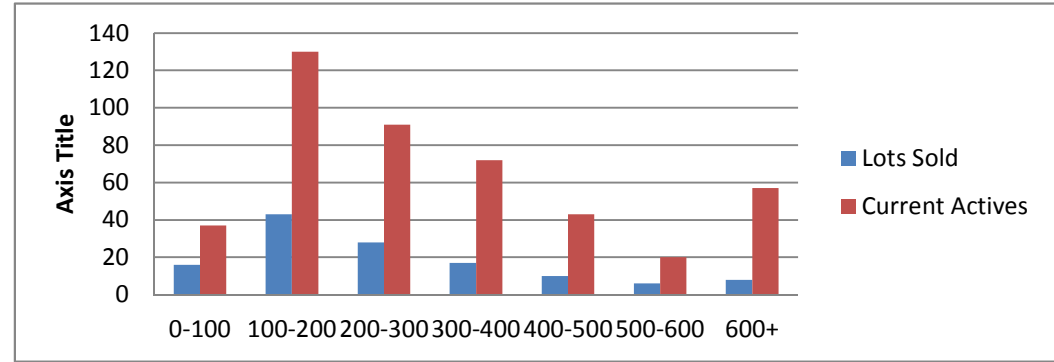


11-5-12-11-5-13 Waterfront Lots on Lake Keowee

	Units Sold	DOM AVG.	Total List Avg	Total Sold Avg	% List/Sale	Current Active	Supply/Yrs
0-100	16	184	\$74,550.00	\$55,137.00	74%	37	2.31
100-200	43	281	\$180,937.00	\$154,530.00	85%	130	3.02
200-300	28	270	\$283,432.00	\$243,803.00	86%	91	3.25
300-400	17	177	\$420,188.00	\$339,500.00	81%	72	4.24
400-500	10	124	\$535,648.00	\$454,740.00	85%	43	4.30
500-600	6	166	\$618,816.00	\$539,833.00	87%	20	3.33
600+	8	176	\$985,625.00	\$848,593.00	86%	57	7.13
<b>Totals</b>	<b>128</b>				<b>84.42%</b>	<b>450</b>	<b>3.52</b>



11-5-12--11-5-13 Waterfront Homes on Lake Keowee

In 1000's	Units Sold	DOM Avg.	List Avg	Sold Avg	List/Sale	Active	Supply/Yrs
250-400	21	210	\$370,690.00	\$338,600.00	91%	12	0.57
400-500	25	182	\$493,260.00	\$457,948.00	93%	18	0.72
500-600	21	174	\$583,852.00	\$540,280.00	93%	25	1.19
600-700	17	141	\$690,547.00	\$644,176.00	93%	30	1.76
700-800	14	268	\$797,092.00	\$739,746.00	93%	31	2.21
800-1000	11	198	\$961,999.00	\$869,000.00	90%	28	2.55
1000-1500	10	164	\$1,439,650.00	\$1,249,000.00	87%	27	2.70
1500-2000	5	113	\$1,775,780.00	\$1,656,900.00	93%	25	5.00
2000-up	3	237	\$2,726,666.00	\$2,283,333.00	84%	13	4.33
<b>Totals</b>	<b>127</b>				<b>90.50%</b>	<b>209</b>	<b>1.65</b>

