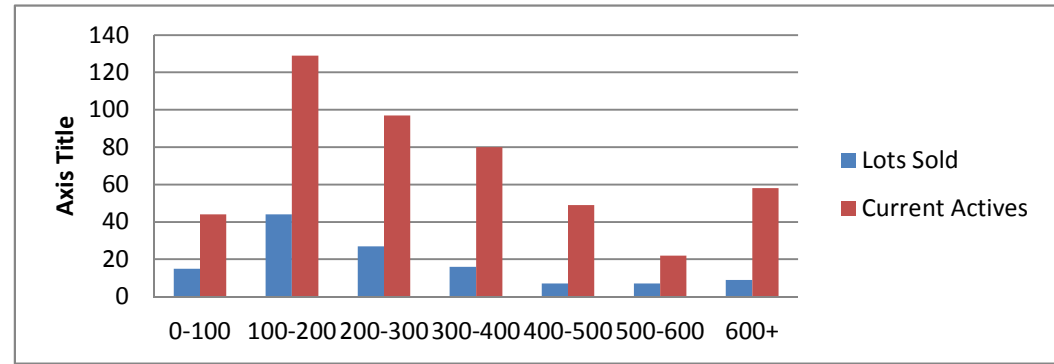


10-7-12-10-7-13 Waterfront Lots on Lake Keowee

	Units Sold	DOM AVG.	Total List Avg	Total Sold Avg	% List/Sale	Current Active	Supply/Yrs
0-100	15	181	\$70,760.00	\$48,980.00	69%	44	2.93
100-200	44	299	\$179,779.00	\$154,120.00	86%	129	2.93
200-300	27	302	\$281,337.00	\$241,166.00	86%	97	3.59
300-400	16	179	\$421,512.00	\$338,531.00	80%	80	5.00
400-500	7	90	\$515,985.00	\$451,785.00	88%	49	7.00
500-600	7	161	\$601,128.00	\$555,571.00	92%	22	3.14
600+	9	192	\$953,333.00	\$820,972.00	86%	58	6.44
Totals	125				84.42%	479	3.83



10-7-12--10-7-13 Waterfront Homes on Lake Keowee

In 1000's	Units Sold	DOM Avg.	List Avg	Sold Avg	List/Sale	Active	Supply/Yrs
250-400	21	210	\$370,690.00	\$338,600.00	91%	15	0.71
400-500	28	180	\$488,914.00	\$456,082.00	93%	18	0.64
500-600	21	174	\$583,852.00	\$540,280.00	93%	28	1.33
600-700	16	134	\$690,331.00	\$642,718.00	93%	29	1.81
700-800	12	307	\$792,941.00	\$737,658.00	93%	30	2.50
800-1000	10	239	\$1,007,149.00	\$892,400.00	89%	29	2.90
1000-1500	11	166	\$1,420,436.00	\$1,235,454.00	87%	31	2.82
1500-2000	6	172	\$1,762,983.00	\$1,647,416.00	93%	26	4.33
2000-up	2	332	\$2,892,500.00	\$2,375,000.00	82%	14	7.00
Totals	127				90.50%	220	1.73

