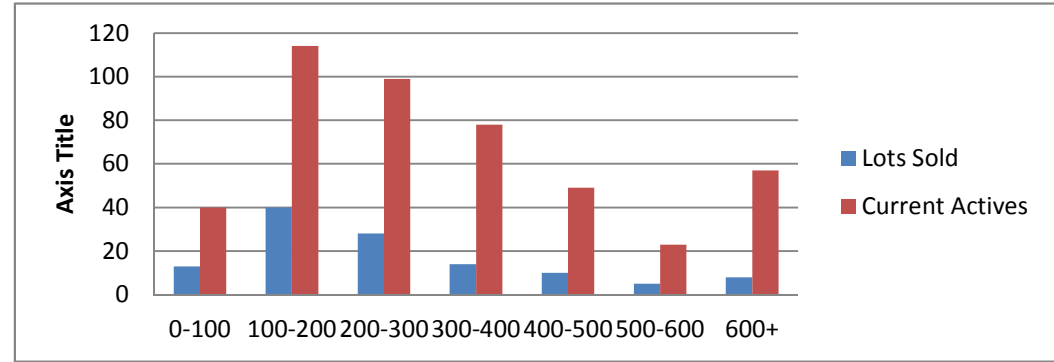


9-4-12--9-4-13 Waterfront Lots on Lake Keowee

	Units Sold	DOM AVG.	Total List Avg	Total Sold Avg	% List/Sale	Current Active	Supply/Yrs
0-100	13	181	\$64,100.00	\$48,515.00	76%	40	3.08
100-200	40	322	\$178,710.00	\$155,185.00	87%	114	2.85
200-300	28	271	\$285,250.00	\$241,857.00	85%	99	3.54
300-400	14	199	\$421,764.00	\$342,571.00	81%	78	5.57
400-500	10	125	\$511,090.00	\$454,650.00	89%	49	4.90
500-600	5	154	\$607,800.00	\$563,000.00	93%	23	4.60
600+	8	192	\$836,250.00	\$723,593.00	87%	57	7.13
Totals	118				84.42%	460	3.90



9-4-12--9-4-13 Waterfront Homes on Lake Keowee

In 1000's	Units Sold	DOM Avg.	List Avg	Sold Avg	List/Sale	Active	Supply/Yrs
250-400	21	194	\$369,761.00	\$338,481.00	92%	16	0.76
400-500	29	180	\$492,393.00	\$454,441.00	92%	20	0.69
500-600	23	168	\$583,256.00	\$543,517.00	93%	25	1.09
600-700	16	161	\$706,462.00	\$648,656.00	92%	27	1.69
700-800	11	285	\$781,300.00	\$735,172.00	94%	33	3.00
800-1000	12	220	\$1,000,033.00	\$867,500.00	87%	30	2.50
1000-1500	8	164	\$1,403,437.00	\$1,220,625.00	87%	31	3.88
1500-2000	6	172	\$1,762,983.00	\$1,647,416.00	93%	23	3.83
2000-up	2	332	\$2,892,500.00	\$2,375,000.00	82%	14	7.00
Totals	128				90.50%	219	1.71

