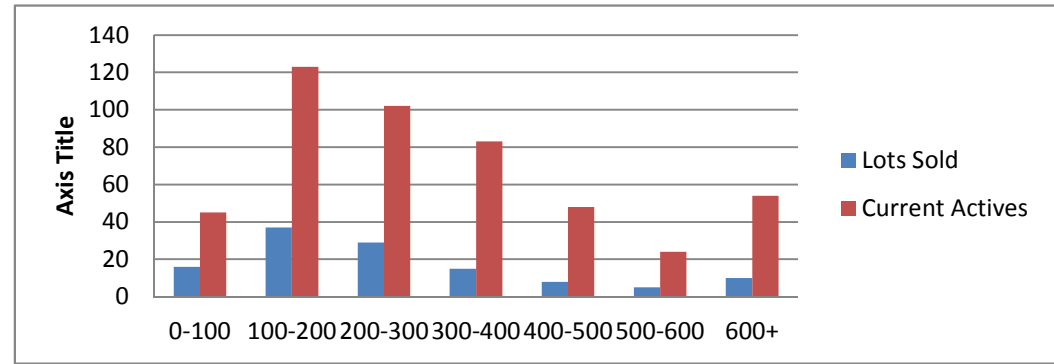


7-17-12--7-17-13 Waterfront Lots on Lake Keowee

	Units Sold	DOM AVG.	Total List Avg	Total Sold Avg	% List/Sale	Current Active	Supply/Yrs
0-100	16	137	\$66,106.00	\$53,293.00	81%	45	2.81
100-200	37	305	\$171,778.00	\$150,467.00	88%	123	3.32
200-300	29	277	\$282,965.00	\$244,275.00	86%	102	3.52
300-400	15	265	\$434,306.00	\$353,666.00	81%	83	5.53
400-500	8	182	\$537,612.00	\$444,312.00	83%	48	6.00
500-600	5	154	\$607,800.00	\$563,000.00	93%	24	4.80
600+	10	171	\$842,990.00	\$718,875.00	85%	54	5.40
Totals	120				84.42%	479	3.99



7-17-12--7-17-13 Waterfront Homes on Lake Keowee

In 1000's	Units Sold	DOM Avg.	List Avg	Sold Avg	List/Sale	Active	Supply/Yrs
250-400	26	187	\$362,265.00	\$332,452.00	92%	14	0.54
400-500	30	194	\$491,643.00	\$451,693.00	92%	23	0.77
500-600	20	144	\$571,274.00	\$538,325.00	94%	26	1.30
600-700	15	149	\$716,953.00	\$645,633.00	90%	25	1.67
700-800	11	296	\$788,490.00	\$738,809.00	94%	29	2.64
800-1000	10	187	\$1,015,139.00	\$888,000.00	87%	30	3.00
1000-1500	12	249	\$1,346,041.00	\$1,198,083.00	89%	29	2.42
1500-2000	5	199	\$1,795,600.00	\$1,670,000.00	93%	25	5.00
2000-up	2	332	\$2,892,500.00	\$2,375,000.00	82%	14	7.00
Totals	131				90.50%	215	1.64

