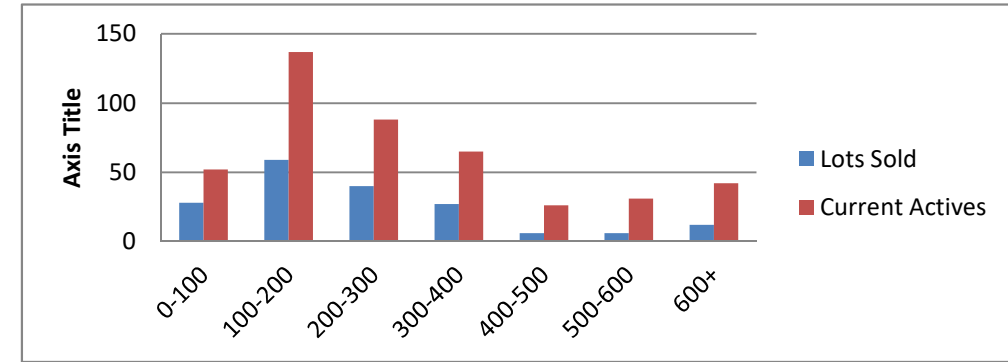


2-6-16--2-6-17 Waterfront Lots on Lake Keowee

	Units Sold	DOM Avg.	Total List Avg	Total Sold Avg	% List/Sale	Current Active	Supply/Yrs
0-100	28	190	\$63,873.00	\$54,060.00	85%	52	1.86
100-200	59	209	\$174,674.00	\$157,061.00	90%	137	2.32
200-300	40	206	\$285,072.00	\$257,866.00	90%	88	2.20
300-400	27	269	\$375,792.00	\$345,753.00	92%	65	2.41
400-500	6	367	\$491,166.00	\$448,166.00	91%	26	4.33
500-600	6	447	\$604,666.00	\$540,000.00	89%	31	5.17
600+	12	420	\$851,116.00	\$773,500.00	91%	42	3.50
<b>Totals</b>	<b>178</b>				<b>84.42%</b>	<b>441</b>	<b>2.48</b>



2-6-16--2-6-17 Waterfront Homes on Lake Keowee

In 1000's	Units Sold	DOM Avg.	List Avg	Sold Avg	List/Sale	Active	Supply/Yrs
200-400	13	258	\$363,646.00	\$335,457.00	92%	11	0.85
400-500	24	137	\$472,420.00	\$447,159.00	95%	10	0.42
500-600	36	148	\$576,352.00	\$546,015.00	95%	12	0.33
600-700	22	182	\$689,692.00	\$658,693.00	96%	20	0.91
700-800	24	167	\$797,566.00	\$750,186.00	94%	10	0.42
800-1000	22	158	\$955,045.00	\$907,407.00	95%	20	0.91
1000-1500	21	186	\$1,374,571.00	\$1,220,856.00	89%	33	1.57
1500-2000	8	138	\$1,751,375.00	\$1,631,062.00	93%	24	3.00
2000-up	0	0	\$0.00	\$0.00	0%	15	#DIV/0!
<b>Totals</b>	<b>170</b>				<b>90.50%</b>	<b>155</b>	<b>0.91</b>

