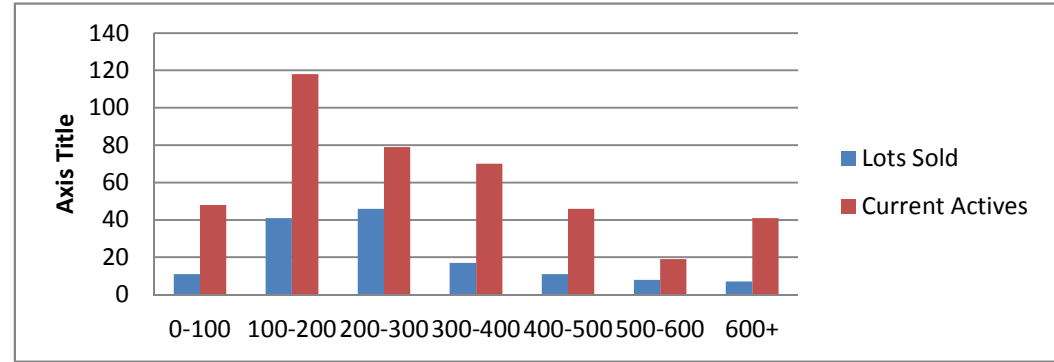


12-3-13--12-3-14 Waterfront Lots on Lake Keowee

	Units Sold	DOM Avg.	Total List Avg	Total Sold Avg	% List/Sale	Current Active	Supply/Yrs
0-100	11	226	\$76,027.00	\$63,263.00	83%	48	4.36
100-200	41	228	\$176,943.00	\$156,141.00	88%	118	2.88
200-300	46	193	\$274,708.00	\$247,293.00	90%	79	1.72
300-400	17	178	\$373,905.00	\$332,500.00	89%	70	4.12
400-500	11	419	\$502,545.00	\$444,409.00	88%	46	4.18
500-600	8	340	\$707,362.00	\$554,375.00	78%	19	2.38
600+	7	240	\$1,292,000.00	\$1,025,000.00	79%	41	5.86
Totals	141				84.42%	421	2.99



12-3-13--12-3-14 Waterfront Homes on Lake Keowee

In 1000's	Units Sold	DOM Avg.	List Avg	Sold Avg	List/Sale	Active	Supply/Yrs
250-400	20	170	\$366,905.00	\$348,050.00	95%	18	0.90
400-500	30	172	\$485,103.00	\$450,498.00	93%	23	0.77
500-600	20	163	\$595,731.00	\$562,111.00	94%	17	0.85
600-700	26	207	\$704,684.00	\$649,346.00	92%	27	1.04
700-800	17	169	\$802,564.00	\$741,264.00	92%	22	1.29
800-1000	20	231	\$961,740.00	\$889,100.00	92%	26	1.30
1000-1500	7	287	\$1,348,714.00	\$1,257,571.00	93%	26	3.71
1500-2000	10	301	\$1,816,050.00	\$1,645,200.00	91%	31	3.10
2000-up	3	215	\$2,763,333.00	\$2,331,666.00	84%	9	3.00
Totals	153				90.50%	199	1.30

