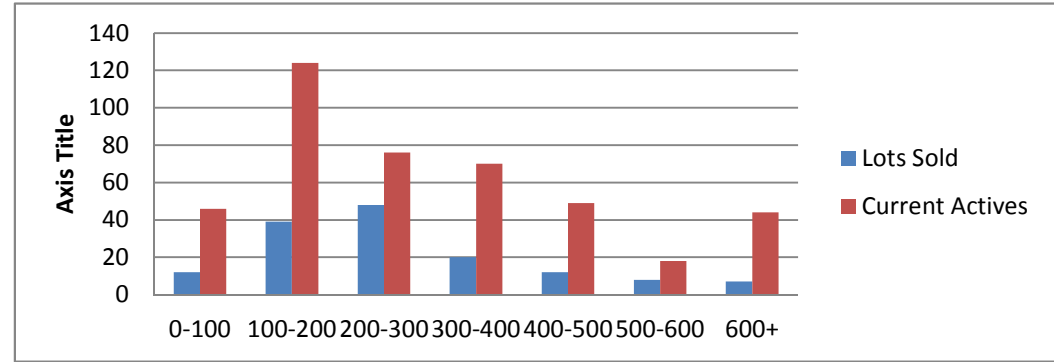


11-5-13--11-5-14 Waterfront Lots on Lake Keowee

	Units Sold	DOM Avg.	Total List Avg	Total Sold Avg	% List/Sale	Current Active	Supply/Yrs
0-100	12	223	\$80,233.00	\$65,075.00	81%	46	3.83
100-200	39	215	\$177,917.00	\$158,046.00	89%	124	3.18
200-300	48	199	\$275,970.00	\$247,312.00	90%	76	1.58
300-400	20	152	\$373,065.00	\$332,325.00	89%	70	3.50
400-500	12	387	\$489,833.00	\$443,625.00	91%	49	4.08
500-600	8	340	\$707,362.00	\$554,375.00	78%	18	2.25
600+	7	240	\$1,292,000.00	\$1,025,000.00	79%	44	6.29
Totals	146				84.42%	427	2.92



11-5-13--11-5-14 Waterfront Homes on Lake Keowee

In 1000's	Units Sold	DOM Avg.	List Avg	Sold Avg	List/Sale	Active	Supply/Yrs
250-400	19	152	\$372,010.00	\$353,315.00	95%	18	0.95
400-500	31	199	\$489,938.00	\$453,675.00	93%	23	0.74
500-600	20	156	\$592,731.00	\$559,611.00	94%	23	1.15
600-700	25	190	\$703,711.00	\$648,560.00	92%	25	1.00
700-800	17	169	\$805,452.00	\$743,735.00	92%	23	1.35
800-1000	19	233	\$965,042.00	\$891,157.00	92%	28	1.47
1000-1500	7	282	\$1,370,857.00	\$1,285,142.00	94%	31	4.43
1500-2000	10	301	\$1,816,050.00	\$1,645,200.00	91%	28	2.80
2000-up	3	215	\$2,763,333.00	\$2,331,666.00	84%	10	3.33
Totals	151				90.50%	209	1.38

