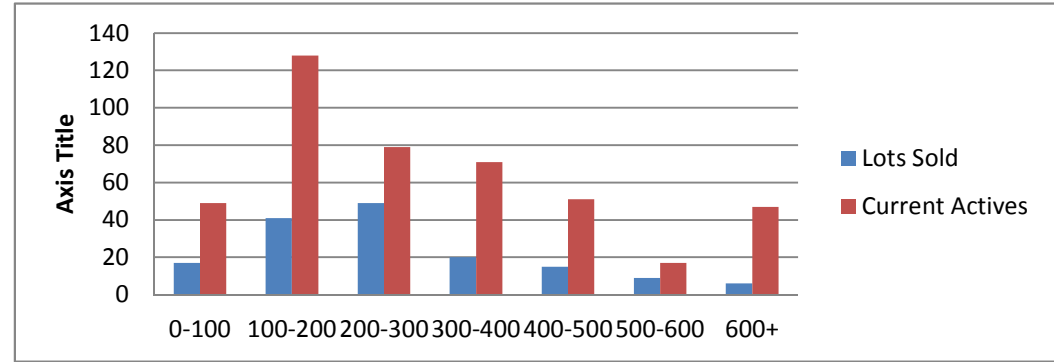


10-2-13--10-2-14 Waterfront Lots on Lake Keowee

	Units Sold	DOM Avg.	Total List Avg	Total Sold Avg	% List/Sale	Current Active	Supply/Yrs
0-100	17	198	\$72,123.00	\$58,847.00	82%	49	2.88
100-200	41	216	\$177,239.00	\$157,629.00	89%	128	3.12
200-300	49	205	\$278,316.00	\$248,469.00	89%	79	1.61
300-400	20	139	\$375,565.00	\$331,625.00	88%	71	3.55
400-500	15	350	\$508,172.00	\$447,226.00	88%	51	3.40
500-600	9	294	\$653,755.00	\$541,111.00	83%	17	1.89
600+	6	152	\$1,307,333.00	\$1,095,833.00	84%	47	7.83
<b>Totals</b>	<b>157</b>				<b>84.42%</b>	<b>442</b>	<b>2.82</b>



10-2-13--10-2-14 Waterfront Homes on Lake Keowee

In 1000's	Units Sold	DOM Avg.	List Avg	Sold Avg	List/Sale	Active	Supply/Yrs
250-400	18	165	\$370,255.00	\$352,661.00	95%	15	0.83
400-500	29	179	\$491,939.00	\$455,202.00	93%	25	0.86
500-600	17	133	\$593,276.00	\$559,105.00	94%	29	1.71
600-700	26	193	\$703,338.00	\$649,288.00	92%	26	1.00
700-800	21	157	\$810,509.00	\$745,383.00	92%	22	1.05
800-1000	20	189	\$943,340.00	\$878,350.00	93%	29	1.45
1000-1500	6	274	\$1,350,166.00	\$1,260,666.00	93%	29	4.83
1500-2000	9	334	\$1,829,500.00	\$1,650,222.00	90%	29	3.22
2000-up	3	216	\$2,596,666.00	\$2,133,333.00	82%	9	3.00
<b>Totals</b>	<b>149</b>				<b>90.50%</b>	<b>213</b>	<b>1.43</b>

