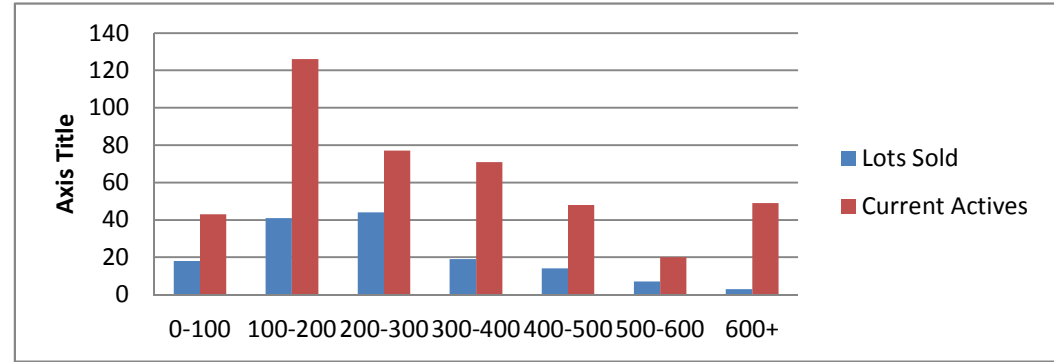


7-1-13--7-1-14 Waterfront Lots on Lake Keowee

	Units Sold	DOM Avg.	Total List Avg	Total Sold Avg	% List/Sale	Current Active	Supply/Yrs
0-100	18	187	\$80,088.00	\$61,327.00	77%	43	2.39
100-200	41	221	\$178,743.00	\$155,658.00	87%	126	3.07
200-300	44	226	\$284,784.00	\$248,670.00	87%	77	1.75
300-400	19	116	\$380,194.00	\$333,131.00	88%	71	3.74
400-500	14	267	\$515,541.00	\$444,992.00	86%	48	3.43
500-600	7	202	\$647,542.00	\$542,000.00	84%	20	2.86
600+	3	25	\$1,015,000.00	\$925,000.00	91%	49	16.33
<b>Totals</b>	<b>146</b>				<b>84.42%</b>	<b>434</b>	<b>2.97</b>



7-1-13--7-1-14 Waterfront Homes on Lake Keowee

In 1000's	Units Sold	DOM Avg.	List Avg	Sold Avg	List/Sale	Active	Supply/Yrs
250-400	22	201	\$370,245.00	\$345,891.00	93%	18	0.82
400-500	24	189	\$495,195.00	\$458,660.00	93%	28	1.17
500-600	16	146	\$596,637.00	\$550,825.00	92%	39	2.44
600-700	28	200	\$695,560.00	\$647,000.00	93%	33	1.18
700-800	21	194	\$814,842.00	\$743,193.00	91%	24	1.14
800-1000	17	249	\$935,758.00	\$864,235.00	92%	30	1.76
1000-1500	8	225	\$1,390,125.00	\$1,262,125.00	91%	32	4.00
1500-2000	5	261	\$1,858,580.00	\$1,673,800.00	90%	32	6.40
2000-up	3	216	\$2,596,666.00	\$2,133,333.00	82%	7	2.33
<b>Totals</b>	<b>144</b>				<b>90.50%</b>	<b>243</b>	<b>1.69</b>

