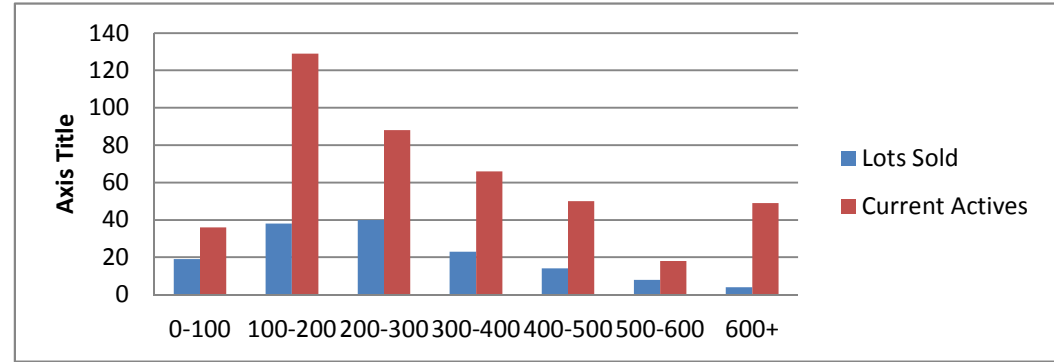


5-6-13--5-6-14 Waterfront Lots on Lake Keowee

	Units Sold	DOM Avg.	Total List Avg	Total Sold Avg	% List/Sale	Current Active	Supply/Yrs
0-100	19	210	\$81,394.00	\$60,863.00	75%	36	1.89
100-200	38	243	\$180,092.00	\$157,923.00	88%	129	3.39
200-300	40	233	\$285,450.00	\$246,612.00	86%	88	2.20
300-400	23	133	\$392,247.00	\$333,826.00	85%	66	2.87
400-500	14	169	\$514,898.00	\$448,385.00	87%	50	3.57
500-600	8	210	\$638,475.00	\$541,750.00	85%	18	2.25
600+	4	19	\$981,250.00	\$913,750.00	93%	49	12.25
Totals	146				84.42%	436	2.99



5-6-13--5-6-14 Waterfront Homes on Lake Keowee

In 1000's	Units Sold	DOM Avg.	List Avg	Sold Avg	List/Sale	Active	Supply/Yrs
250-400	17	211	\$379,270.00	\$349,624.00	92%	18	1.06
400-500	19	216	\$500,005.00	\$463,232.00	93%	25	1.32
500-600	20	150	\$583,349.00	\$545,195.00	93%	42	2.10
600-700	23	209	\$702,904.00	\$650,043.00	92%	30	1.30
700-800	18	237	\$812,650.00	\$738,114.00	91%	32	1.78
800-1000	19	234	\$928,310.00	\$863,526.00	93%	28	1.47
1000-1500	8	244	\$1,383,500.00	\$1,243,750.00	90%	29	3.63
1500-2000	7	250	\$1,854,557.00	\$1,702,714.00	92%	29	4.14
2000-up	3	152	\$2,595,000.00	\$2,128,333.00	82%	8	2.67
Totals	134				90.50%	241	1.80

