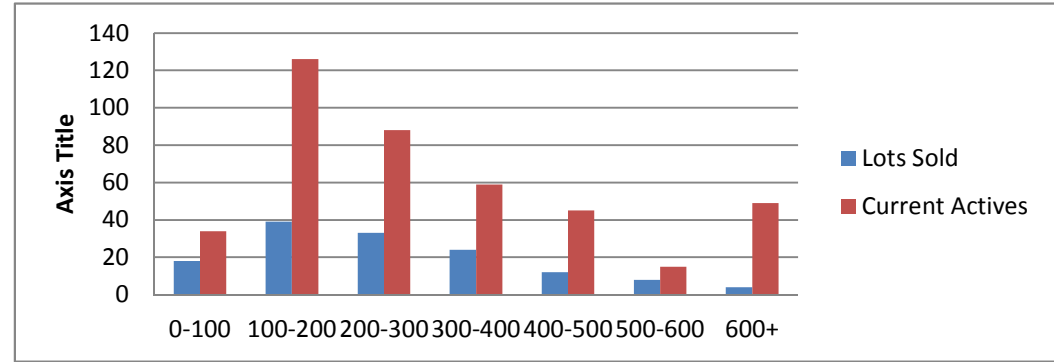


3-6-13--3-6-14 Waterfront Lots on Lake Keowee

	Units Sold	DOM Avg.	Total List Avg	Total Sold Avg	% List/Sale	Current Active	Supply/Yrs
0-100	18	202	\$80,416.00	\$59,994.00	75%	34	1.89
100-200	39	234	\$174,902.00	\$152,461.00	87%	126	3.23
200-300	33	265	\$299,075.00	\$248,181.00	83%	88	2.67
300-400	24	158	\$399,737.00	\$334,104.00	84%	59	2.46
400-500	12	140	\$521,132.00	\$448,116.00	86%	45	3.75
500-600	8	210	\$638,475.00	\$541,750.00	85%	15	1.88
600+	4	37	\$817,500.00	\$724,687.00	89%	49	12.25
<b>Totals</b>	<b>138</b>				<b>84.42%</b>	<b>416</b>	<b>3.01</b>



3-6-13--3-6-14 Waterfront Homes on Lake Keowee

In 1000's	Units Sold	DOM Avg.	List Avg	Sold Avg	List/Sale	Active	Supply/Yrs
250-400	19	227	\$371,705.00	\$341,900.00	92%	12	0.63
400-500	22	187	\$494,636.00	\$462,986.00	94%	19	0.86
500-600	21	152	\$583,195.00	\$546,757.00	94%	23	1.10
600-700	20	144	\$682,145.00	\$642,800.00	94%	25	1.25
700-800	16	222	\$812,925.00	\$742,440.00	91%	30	1.88
800-1000	18	262	\$959,944.00	\$872,333.00	91%	24	1.33
1000-1500	9	225	\$1,403,944.00	\$1,265,555.00	90%	24	2.67
1500-2000	5	133	\$1,856,580.00	\$1,706,900.00	92%	28	5.60
2000-up	3	152	\$2,595,000.00	\$2,128,333.00	82%	9	3.00
<b>Totals</b>	<b>133</b>				<b>90.50%</b>	<b>194</b>	<b>1.46</b>

