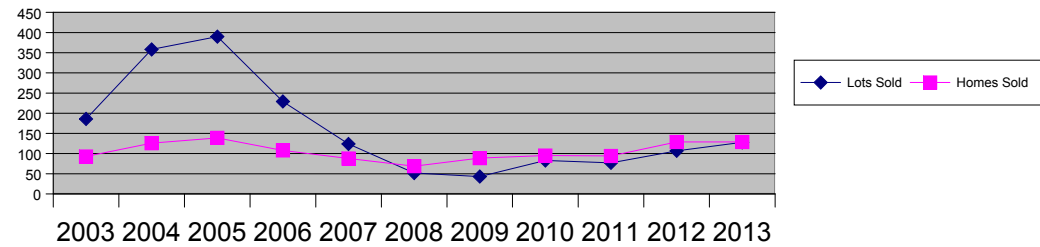
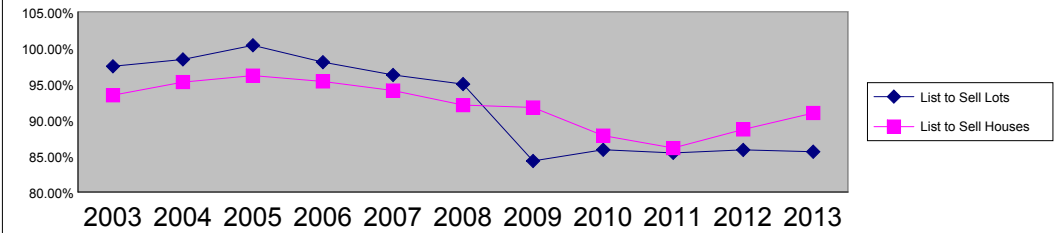


Lots	2003	2004	2005	2006	2007	2008	2009	2010	2011	2012	2013
Units	186	358	390	229	124	52	43	83	77	107	128
Avg. List	\$184,881	\$190,640	\$281,113	\$495,049	\$474,546	\$560,125	\$487,083	\$291,085	\$294,657	\$302,413	\$295,395
Avg. Sold	\$180,188	\$187,619	\$282,153	\$485,305	\$456,742	\$532,091	\$410,777	\$249,982	\$251,757	\$259,674	\$252,883
Tot. Vol.	\$33,514,995	\$67,167,717	\$110,039,731	\$111,134,904	\$56,636,041	\$27,668,783	\$17,663,425	\$20,748,550	\$22,154,650	\$27,785,150	\$28,275,150
List/Sale	97.46%	98.42%	100.37%	98.03%	96.25%	95.00%	84.33%	85.88%	85.44%	85.87%	85.61%
Homes	2003	2004	2005	2006	2007	2008	2009	2010	2011	2012	2013
Units	93	126	139	108	88	69	89	95	94	129	129
Avg. List	\$488,175	\$532,232	\$633,541	\$918,168	\$853,825	\$919,450	\$727,617	\$807,870	\$873,687	\$741,649	\$769,589
Avg. Sold	\$456,225	\$507,014	\$609,199	\$875,482	\$803,432	\$846,541	\$667,624	\$709,658	\$752,512	\$657,878	\$700,164
Tot. Vol.	\$42,428,945	\$63,883,804	\$84,678,689	\$94,552,113	\$70,702,093	\$58,411,380	\$59,418,550	\$67,417,547	\$70,736,184	\$84,866,351	\$90,321,281
List/Sale	93.46%	95.26%	96.16%	95.35%	94.10%	92.07%	91.75%	87.84%	86.13%	88.70%	90.98%

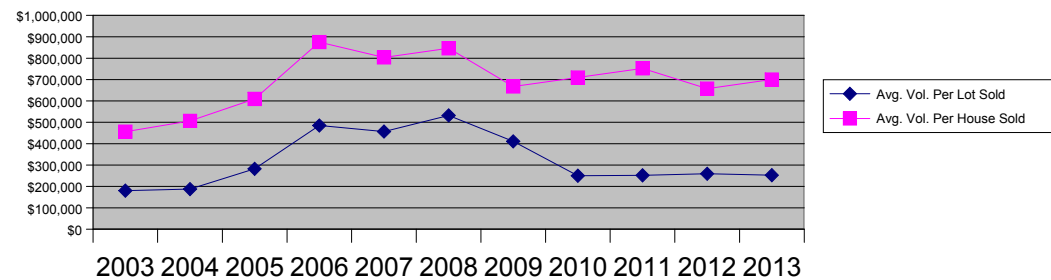
Waterfront Lake Keowee Home and Lot Units Sold Per Year



List Price to Sell Price Ratio for Waterfront Lots and Homes



Avg. Waterfront Lake Keowee Home and Lot Volume Sold Per Unit Per Year



Total Volume Sold Homes and Lots

