

Mississippi
OCONEE COUNTY PLANNING COMMISSION
 418 E. First Street
 Vicksburg, MS 39181



0
 Aug
 2/16/12

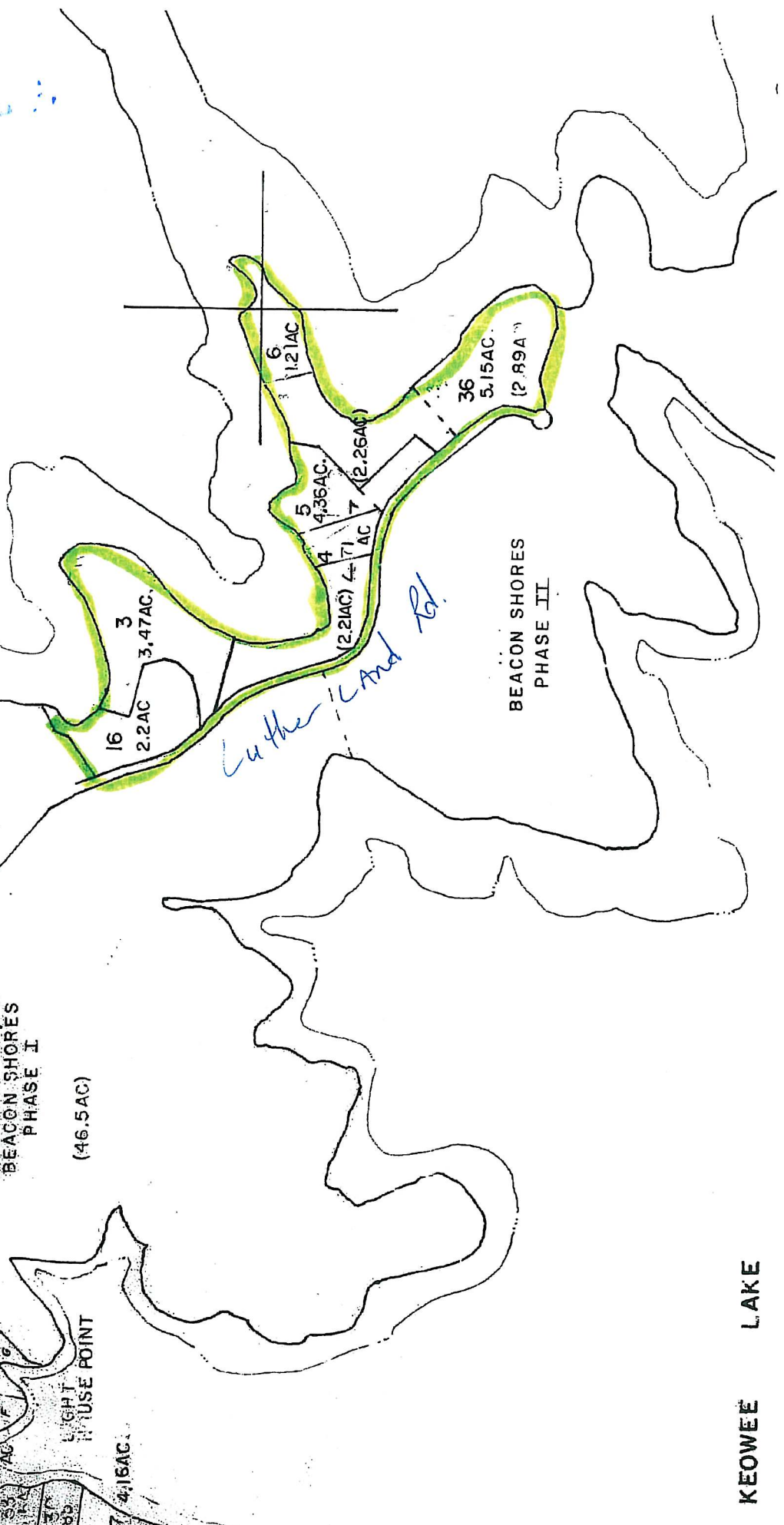
13 day of
 2002
 and Certified
 is, Occonee County

SEE
MAP 164-2
PETTY COVE
9 5.752 AC.

ROTHERLAND RD
13 1.11 AC
14 1.16 AC
8 3.463 AC
1029 1.029 AC
1028 1.028 AC
1027 1.027 AC
1026 1.026 AC
1025 1.025 AC
1024 1.024 AC
1023 1.023 AC
1022 1.022 AC
1021 1.021 AC
1020 1.020 AC
1019 1.019 AC
1018 1.018 AC
1017 1.017 AC
1016 1.016 AC
1015 1.015 AC
1014 1.014 AC
1013 1.013 AC
1012 1.012 AC
1011 1.011 AC
1010 1.010 AC
1009 1.009 AC
1008 1.008 AC
1007 1.007 AC
1006 1.006 AC
1005 1.005 AC
1004 1.004 AC
1003 1.003 AC
1002 1.002 AC
1001 1.001 AC

SEE
MAP 164-0304
BEACON SHORES
PHASE I
(46.5 AC)

SEE
MAP 164-01
KEOWEE POINTE
SUB.



KEOWEE LAKE