

Laurel Pointe

Property Designation: Tract # 150-00-01-63
 SB118

Plat Book Reference: P-60 Page No. 174
 A-166 B

State: SOUTH CAROLINA County: OCCONEE

Legend:
 A H.S. Nat Set
 O I.P.S. Iron Pin Set 1/2"
 F (AS NOTED) Iron Pin Found

Legend:
 ▲ N.F. Nat Found
 □ Point, Unless Otherwise Noted
 ■ Conc. Utn. (P)

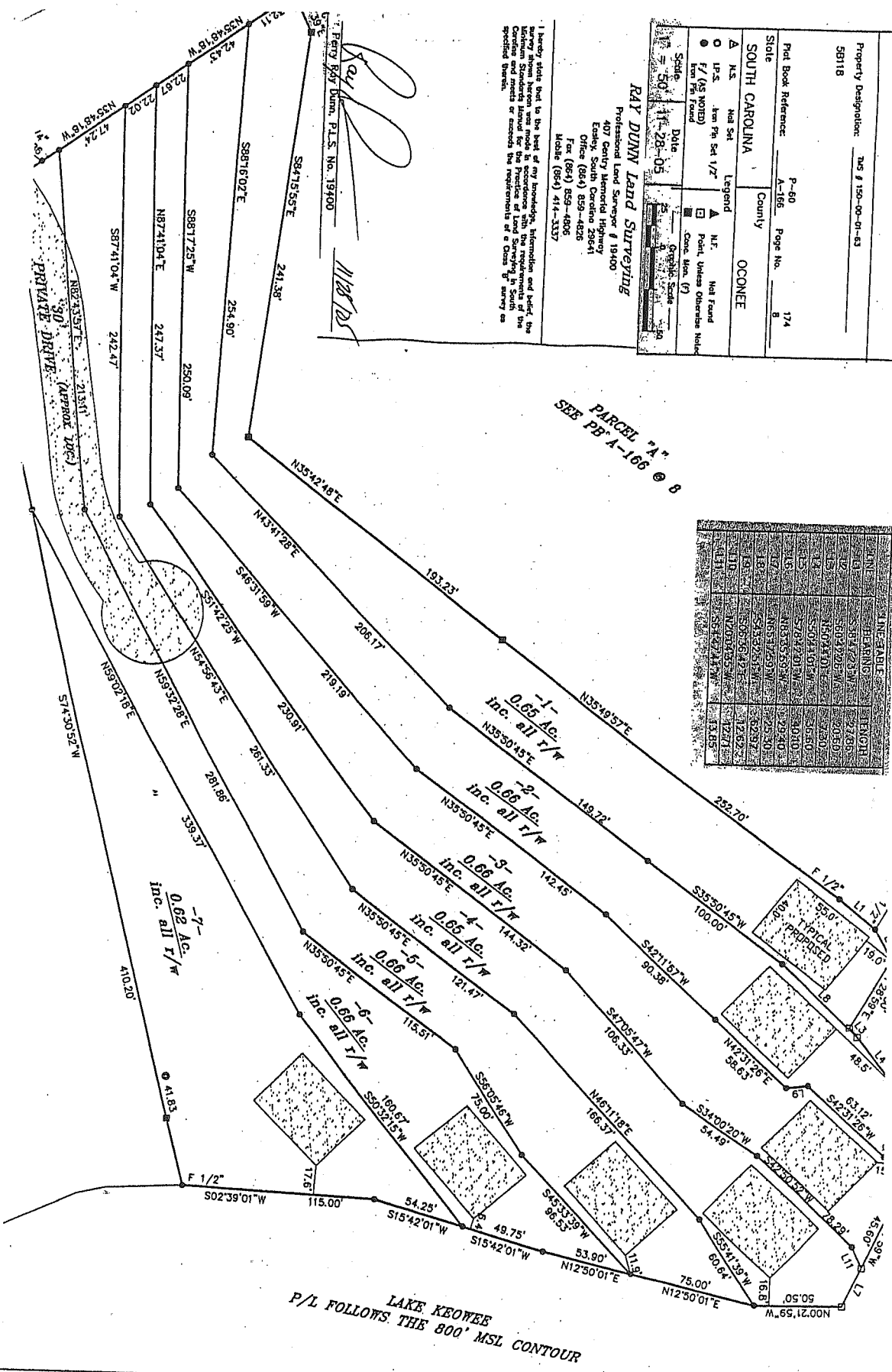
Scale: 1" = 50'
 Date: 11-28-05

RAY DUNN Land Surveying
 Professional Land Surveyor # 19400
 407 Century Memorial Highway
 Essex, South Carolina 29641
 Office (864) 859-4826
 Mobile (864) 859-4806
 Facs (864) 414-3337

I hereby state that to the best of my knowledge, information and belief, the survey shown hereon was made in accordance with the requirements of the Statutes and Standards Manual for the Practice of Land Surveying in the State of South Carolina and complies with the requirements of a Class "B" survey as specified therein.

PARCEL "A"
 SEE PB "A-166 @ B

LINE	BEARING	LENGTH	AREA
1	S88°16'07"E	254.90'	12,295.00
2	N87°41'04"E	247.37'	10,810.00
3	S87°41'04"W	242.47'	10,560.00
4	N82°33'57"E	213.81'	9,410.00
5	S87°41'04"W	242.47'	10,560.00
6	N87°41'04"E	247.37'	10,810.00
7	S88°16'07"E	254.90'	12,295.00
8	N83°42'48"E	241.38'	11,810.00
9	N35°42'48"E	193.23'	7,510.00
10	N35°49'57"E	149.72'	5,710.00
11	N35°50'45"E	100.00'	4,000.00
12	S35°50'45"W	100.00'	4,000.00
13	S42°11'57"W	90.38'	3,630.00
14	S47°05'47"W	106.35'	4,260.00
15	N46°11'16"E	166.37'	6,110.00
16	S35°02'46"W	75.00'	2,810.00
17	S45°13'39"W	96.53'	3,540.00
18	S15°42'01"W	53.90'	1,160.00
19	N12°50'01"E	75.00'	2,810.00
20	S34°00'20"W	57.49'	1,640.00
21	S42°50'02"W	78.28'	2,410.00
22	S42°31'26"W	78.28'	2,410.00
23	S42°31'26"E	78.28'	2,410.00
24	N42°31'26"E	78.28'	2,410.00
25	S42°31'26"E	78.28'	2,410.00
26	S42°31'26"E	78.28'	2,410.00
27	S42°31'26"E	78.28'	2,410.00
28	S42°31'26"E	78.28'	2,410.00
29	S42°31'26"E	78.28'	2,410.00
30	S42°31'26"E	78.28'	2,410.00
31	S42°31'26"E	78.28'	2,410.00
32	S42°31'26"E	78.28'	2,410.00
33	S42°31'26"E	78.28'	2,410.00
34	S42°31'26"E	78.28'	2,410.00
35	S42°31'26"E	78.28'	2,410.00
36	S42°31'26"E	78.28'	2,410.00
37	S42°31'26"E	78.28'	2,410.00
38	S42°31'26"E	78.28'	2,410.00
39	S42°31'26"E	78.28'	2,410.00
40	S42°31'26"E	78.28'	2,410.00
41	S42°31'26"E	78.28'	2,410.00
42	S42°31'26"E	78.28'	2,410.00
43	S42°31'26"E	78.28'	2,410.00
44	S42°31'26"E	78.28'	2,410.00
45	S42°31'26"E	78.28'	2,410.00
46	S42°31'26"E	78.28'	2,410.00
47	S42°31'26"E	78.28'	2,410.00
48	S42°31'26"E	78.28'	2,410.00
49	S42°31'26"E	78.28'	2,410.00
50	S42°31'26"E	78.28'	2,410.00
51	S42°31'26"E	78.28'	2,410.00
52	S42°31'26"E	78.28'	2,410.00
53	S42°31'26"E	78.28'	2,410.00
54	S42°31'26"E	78.28'	2,410.00
55	S42°31'26"E	78.28'	2,410.00
56	S42°31'26"E	78.28'	2,410.00
57	S42°31'26"E	78.28'	2,410.00
58	S42°31'26"E	78.28'	2,410.00
59	S42°31'26"E	78.28'	2,410.00
60	S42°31'26"E	78.28'	2,410.00
61	S42°31'26"E	78.28'	2,410.00
62	S42°31'26"E	78.28'	2,410.00
63	S42°31'26"E	78.28'	2,410.00
64	S42°31'26"E	78.28'	2,410.00
65	S42°31'26"E	78.28'	2,410.00
66	S42°31'26"E	78.28'	2,410.00
67	S42°31'26"E	78.28'	2,410.00
68	S42°31'26"E	78.28'	2,410.00
69	S42°31'26"E	78.28'	2,410.00
70	S42°31'26"E	78.28'	2,410.00
71	S42°31'26"E	78.28'	2,410.00
72	S42°31'26"E	78.28'	2,410.00
73	S42°31'26"E	78.28'	2,410.00
74	S42°31'26"E	78.28'	2,410.00
75	S42°31'26"E	78.28'	2,410.00
76	S42°31'26"E	78.28'	2,410.00
77	S42°31'26"E	78.28'	2,410.00
78	S42°31'26"E	78.28'	2,410.00
79	S42°31'26"E	78.28'	2,410.00
80	S42°31'26"E	78.28'	2,410.00
81	S42°31'26"E	78.28'	2,410.00
82	S42°31'26"E	78.28'	2,410.00
83	S42°31'26"E	78.28'	2,410.00
84	S42°31'26"E	78.28'	2,410.00
85	S42°31'26"E	78.28'	2,410.00
86	S42°31'26"E	78.28'	2,410.00
87	S42°31'26"E	78.28'	2,410.00
88	S42°31'26"E	78.28'	2,410.00
89	S42°31'26"E	78.28'	2,410.00
90	S42°31'26"E	78.28'	2,410.00
91	S42°31'26"E	78.28'	2,410.00
92	S42°31'26"E	78.28'	2,410.00
93	S42°31'26"E	78.28'	2,410.00
94	S42°31'26"E	78.28'	2,410.00
95	S42°31'26"E	78.28'	2,410.00
96	S42°31'26"E	78.28'	2,410.00
97	S42°31'26"E	78.28'	2,410.00
98	S42°31'26"E	78.28'	2,410.00
99	S42°31'26"E	78.28'	2,410.00
100	S42°31'26"E	78.28'	2,410.00



P/L FOLLOWS THE 800' MSL CONTOUR