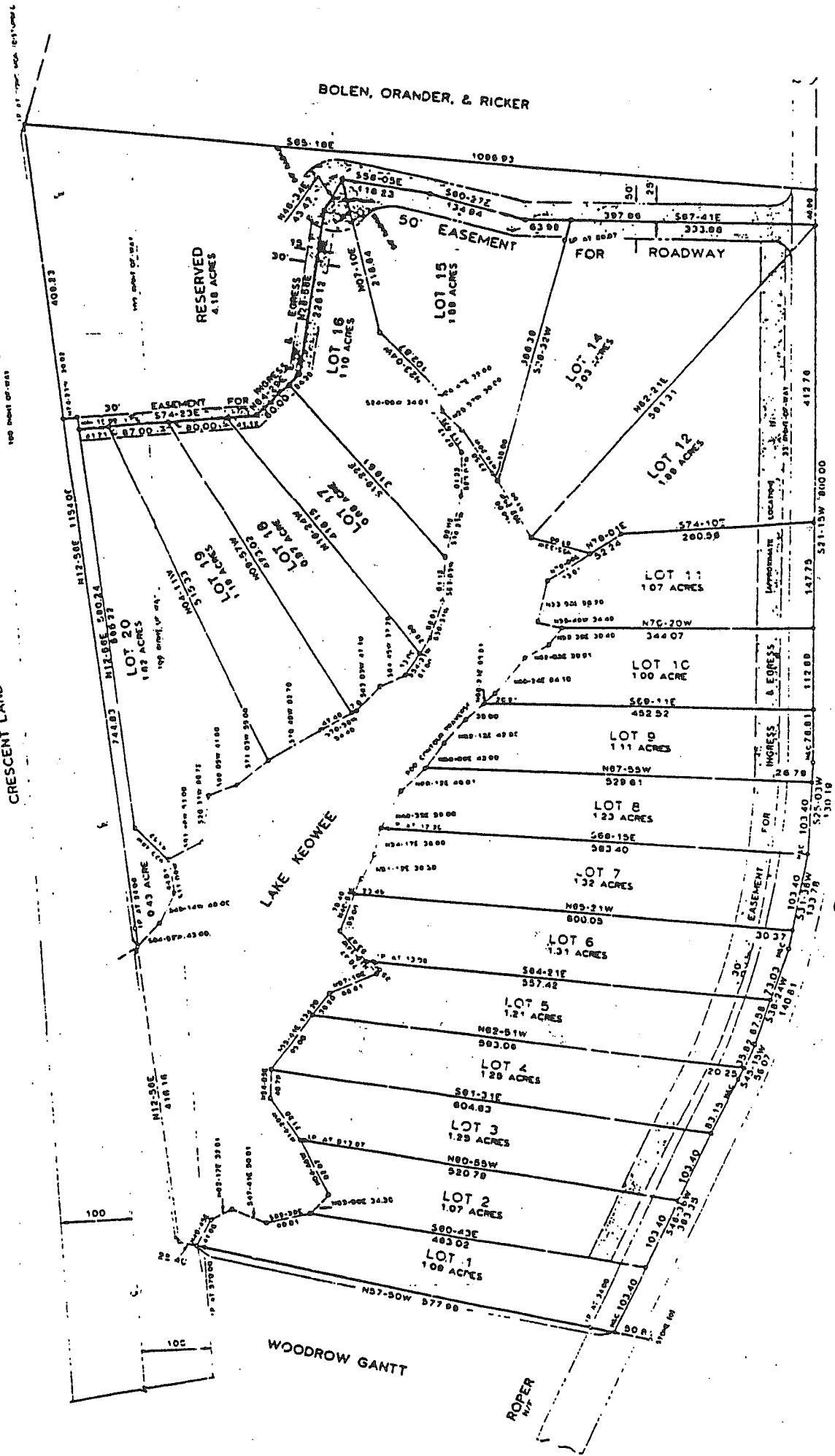


East Cove

CRESCENT LAND & TIMBER CORP.

BOLEN, ORANDER, & RICKER



183

HIGHWAY

S. C.

NOTE
 (1) 800 CONTOUR TRVERSE INFORMATION TAKEN FROM CRESCENT AND B. TIMBER CORP.
 PLATS OF KEOWEE TOXAWAY PROJECT (BALANCED DATA SHOWN ON THIS PLAT) PROPERTY
 LINE FOLLOWS 800' CONTOUR ELEVATION
 THIS PLAT WAS PREPARED FOR LOT 12 - 20 DATED DECEMBER 28, 1984