

Hartwell's fortunes rise with 6-foot gain

By Anna Simon
 CLEMSON BUREAU
 asimon@greenvillenews.com

CLEMSON — Rain over the last week brought Lake Hartwell up more than 6 feet from its Dec. 9 record low, according to U.S. Army Corps of Engineers data, but the coming week won't be as wet.

The Upstate received about 2½ inches of rain in the last week, with the Lake Hartwell area getting more than 3 inches, according to the National Weather Service.

Most of the coming week looks to be dry, said Jeffrey Taylor, a meteorologist at the National Weather Center in Greer.

Hartwell was 643.73 feet above mean sea level Friday, which is 16.27 feet below full pool of

MORE ONLINE
 ■ Click on the link with this story for a list of Lake Hartwell boat ramps now open.

greenvilleonline.com

660 feet, according to corps data. The last time Hartwell was this high was Oct. 5.

"Every additional inch of elevation is going to put us in that much better a situation to get through the summer of 2009," said Virgil Hobbs, operations project manager at the corps' Hartwell Lake office.

Due to the lake level increase, 24 boat ramps have reopened, according to the corps' Web site.

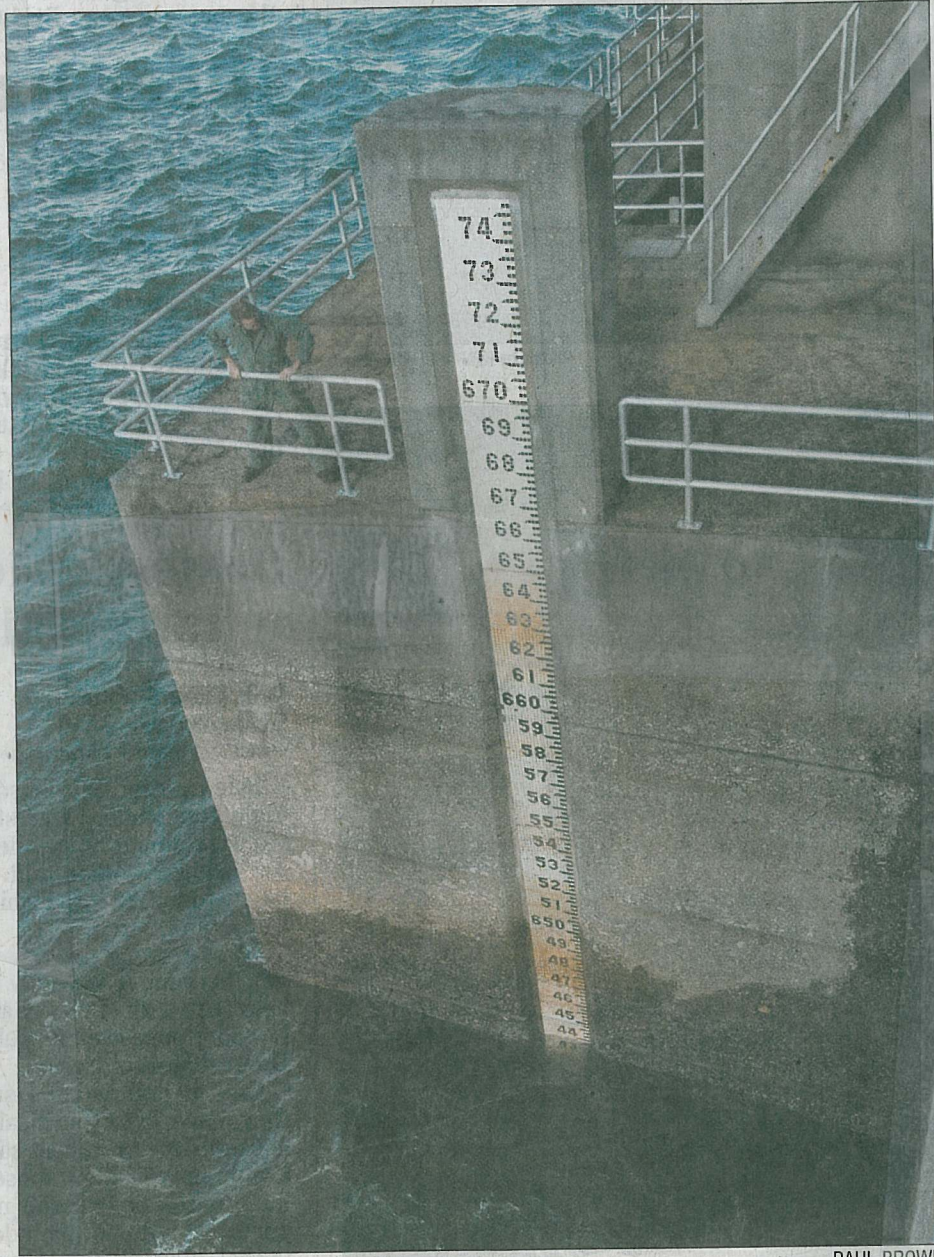
Corps predictions put the lake at 646 feet by

See LAKE on page 5A

Lake Hartwell elevation in feet

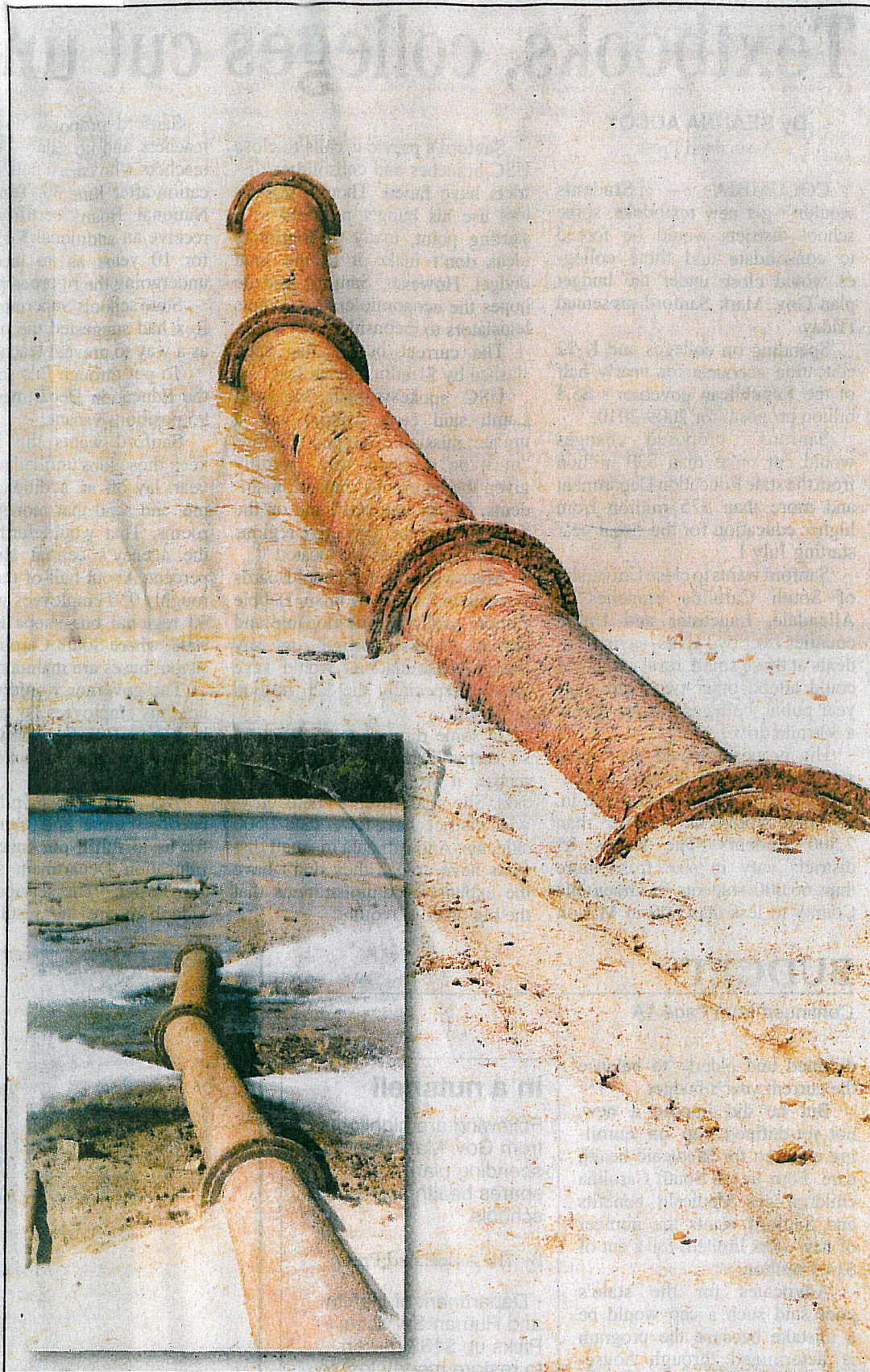


Lake's condition looking up



PAUL BROWN

Tim Morrill checks the headwater tile gauge at the Lake Hartwell dam. Rains have raised the lake's level 6 feet. The 660 mark is full-pond level.



Jessica Nelms/Staff

Lake levels on the move

These photos show the pipe that carries water from the Clemson University utilities facility back into Lake Hartwell. As the images attest, recent rains are having an impact on low lake levels. The inset photo was taken Nov. 1. The other shows the lake level as of Wednesday. Weather officials said the Upstate has received four-six inches of rain during the past 10 days.