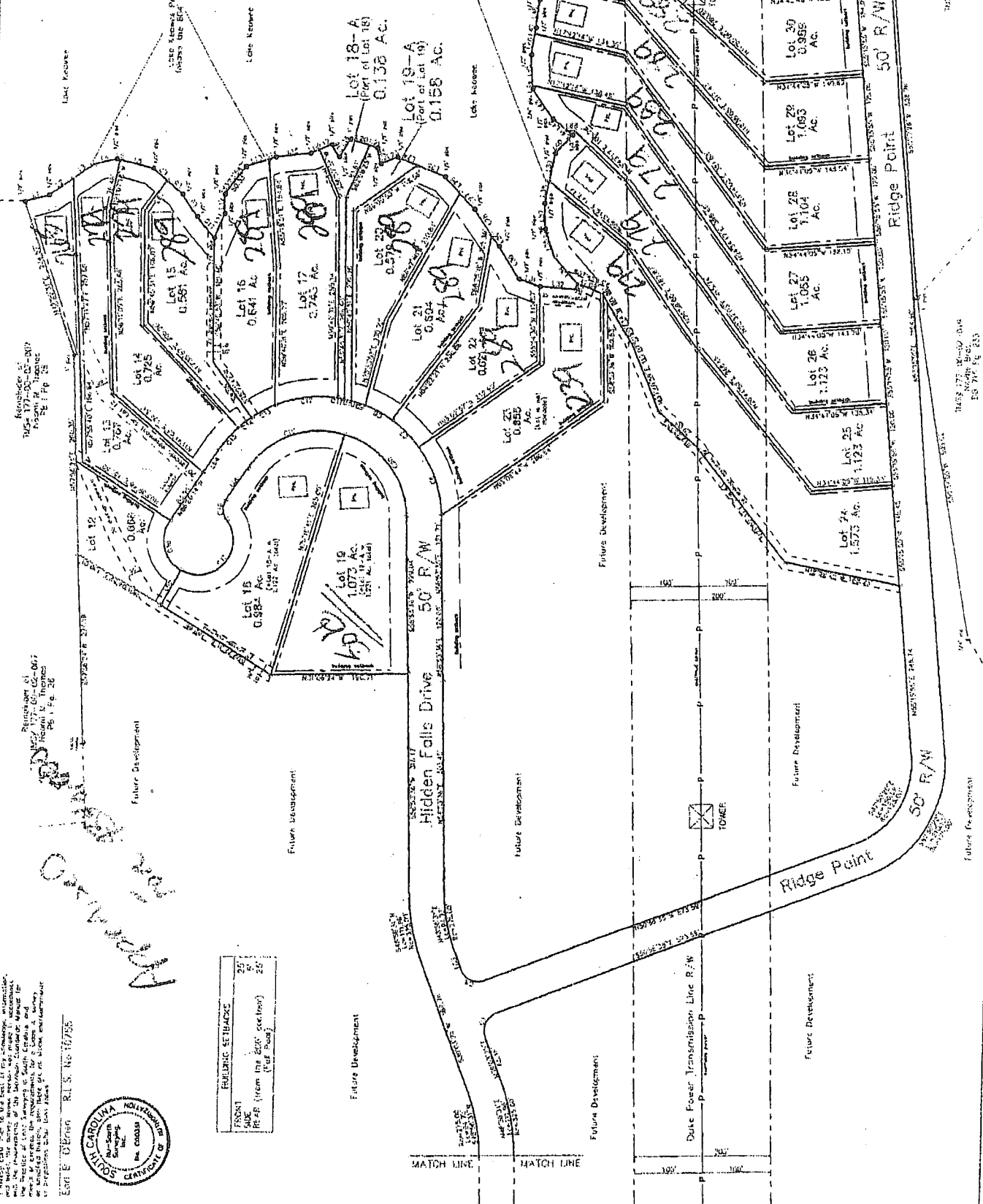


# Hidden Falls

177-00-02-007

**NOTES:**

1. Refer to 177-00-02-007
2. Refer to 177-00-02-007
3. Refer to 177-00-02-007
4. Refer to 177-00-02-007
5. Refer to 177-00-02-007
6. Refer to 177-00-02-007
7. Refer to 177-00-02-007
8. Refer to 177-00-02-007
9. Refer to 177-00-02-007
10. Refer to 177-00-02-007
11. Refer to 177-00-02-007
12. Refer to 177-00-02-007
13. Refer to 177-00-02-007
14. Refer to 177-00-02-007
15. Refer to 177-00-02-007
16. Refer to 177-00-02-007
17. Refer to 177-00-02-007
18. Refer to 177-00-02-007
19. Refer to 177-00-02-007
20. Refer to 177-00-02-007
21. Refer to 177-00-02-007
22. Refer to 177-00-02-007
23. Refer to 177-00-02-007
24. Refer to 177-00-02-007
25. Refer to 177-00-02-007
26. Refer to 177-00-02-007
27. Refer to 177-00-02-007
28. Refer to 177-00-02-007
29. Refer to 177-00-02-007
30. Refer to 177-00-02-007
31. Refer to 177-00-02-007
32. Refer to 177-00-02-007
33. Refer to 177-00-02-007
34. Refer to 177-00-02-007
35. Refer to 177-00-02-007
36. Refer to 177-00-02-007
37. Refer to 177-00-02-007
38. Refer to 177-00-02-007
39. Refer to 177-00-02-007
40. Refer to 177-00-02-007
41. Refer to 177-00-02-007
42. Refer to 177-00-02-007
43. Refer to 177-00-02-007
44. Refer to 177-00-02-007
45. Refer to 177-00-02-007
46. Refer to 177-00-02-007
47. Refer to 177-00-02-007
48. Refer to 177-00-02-007
49. Refer to 177-00-02-007
50. Refer to 177-00-02-007
51. Refer to 177-00-02-007
52. Refer to 177-00-02-007
53. Refer to 177-00-02-007
54. Refer to 177-00-02-007
55. Refer to 177-00-02-007
56. Refer to 177-00-02-007
57. Refer to 177-00-02-007
58. Refer to 177-00-02-007
59. Refer to 177-00-02-007
60. Refer to 177-00-02-007
61. Refer to 177-00-02-007
62. Refer to 177-00-02-007
63. Refer to 177-00-02-007
64. Refer to 177-00-02-007
65. Refer to 177-00-02-007
66. Refer to 177-00-02-007
67. Refer to 177-00-02-007
68. Refer to 177-00-02-007
69. Refer to 177-00-02-007
70. Refer to 177-00-02-007
71. Refer to 177-00-02-007
72. Refer to 177-00-02-007
73. Refer to 177-00-02-007
74. Refer to 177-00-02-007
75. Refer to 177-00-02-007
76. Refer to 177-00-02-007
77. Refer to 177-00-02-007
78. Refer to 177-00-02-007
79. Refer to 177-00-02-007
80. Refer to 177-00-02-007
81. Refer to 177-00-02-007
82. Refer to 177-00-02-007
83. Refer to 177-00-02-007
84. Refer to 177-00-02-007
85. Refer to 177-00-02-007
86. Refer to 177-00-02-007
87. Refer to 177-00-02-007
88. Refer to 177-00-02-007
89. Refer to 177-00-02-007
90. Refer to 177-00-02-007
91. Refer to 177-00-02-007
92. Refer to 177-00-02-007
93. Refer to 177-00-02-007
94. Refer to 177-00-02-007
95. Refer to 177-00-02-007
96. Refer to 177-00-02-007
97. Refer to 177-00-02-007
98. Refer to 177-00-02-007
99. Refer to 177-00-02-007
100. Refer to 177-00-02-007



**BUILDING SETBACKS:**

FRONT	25'
SIDE	25'
REAR (from the 20' setback)	25'
(1/2" Rule)	25'

Earl E. Brian R.I.S. No. 10725



*Handwritten signature: Earl E. Brian*

177-00-02-007  
North Block  
Pg. 1 of 2

177-00-02-007  
North Block  
Pg. 2 of 2